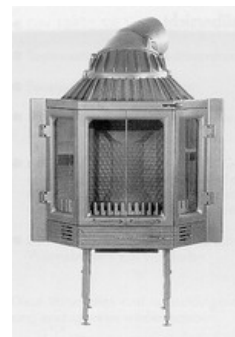




## Appliances properties: Olsberg GmbH - Olsberg - HK 12 - 19/169

### Master data

<b>Date of entry</b>	Apr 6, 2011
<b>Manufacturer</b>	Olsberg GmbH - Olsberg
<b>Model</b>	HK 12
<b>Product code</b>	19/169
<b>Nominal heat output [kW]</b>	11
<b>Continuous burning appliance</b>	<input type="checkbox"/>
<b>Type test standard</b>	DIN 18895
<b>Year of testing</b>	1989



### Further important characteristics of the appliance

**Suitability for installation to a shared flue<sup>1)</sup>**



**Connectivity to the central heating system**



**General technical approval for room sealed operation**



<sup>1)</sup> For unsealed operation it is possible to install the appliances to a shared flue system (please see installation manual).

On behalf of the manufacturer, the HKI Industrieverband e.V. hereby confirms compliance with the respective requirements\* in accordance with 1.BImSchV. The type test report of the fireplace has been submitted to the HKI Industrieverband e.V.

\* A green check mark with a „1“ indicates that the requirements of the 1st BImSchV are fulfilled, a green check mark with a „2“ indicates that the 2nd level of the 1st BImSchV is fulfilled. A yellow check mark shows that the transitional regulation of the 1st BImSchV is fulfilled and a red line means that the 1st BImSchV is not fulfilled.

### Evaluation of emission data and efficiency Wood

**Norm : Inset appliances (with closed firedoor)**

**Evaluation**

D - 1.BImSchV



According to the transitional rule §26 the appliance can be used until 31.12.2020

F - Crédit d'impôt à la transition énergétique



## Norm : Inset appliances (with closed firedoor)

## Evaluation

D - 1.BImSchV

!

According to the transitional rule §26 the appliance can be used until 31.12.2020

## Emission evaluation legend

-  Compliant with the requirements of the 2nd stage of the 1.BImSchV (only for Germany)
-  Compliant with the requirements of the 1st stage of the 1.BImSchV (only for Germany)
-  Compliant with the requirements of the Austrian Agreement pursuant to Art. 15a B-VG from 2015 (applies only to Austria)
-  Compliant with the requirements for the „Crédit d'impôt“ promotion in France, the fireplace complies with the classification 7\* of the Flamme Verte Label
-  Compliant with the requirements for the „Crédit d'impôt“ promotion in France, the fireplace complies with the classification 6\* of the Flamme Verte Label
-  Compliant with the requirements for the „Crédit d'impôt“ promotion in France, the fireplace complies with the classification 5\* of the Flamme Verte Label
-  Compliant with the requirements of the 1 star stage in Italy.
-  Compliant with the requirements of the 2 star stage in Italy.
-  Compliant with the requirements of the 3 star stage in Italy.
-  Compliant with the requirements of the 4 star stage in Italy.
-  Compliant with the requirements of the 5 star stage in Italy.
-  Fulfils the requirements
-  Complies with requirements of the transition ruling (1.BImSchV)
-  Requirements are not fulfilled
-  No information/unknown
-  No measuring values are available for this fuel, operation with this fuel is not permitted

No symbol means that there are no requirements.

Here you will find further information