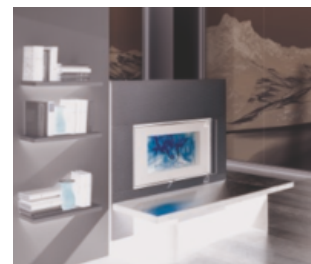




Appliances properties: Max Blank GmbH - Belfort XS

Master data

Date of entry	Dec 16, 2015
Manufacturer	Max Blank GmbH
Model	Belfort XS
Nominal heat output [kW]	6.7
Declared nominal space heating output [kW]	6.7
Continuous burning appliance	—
Type test standard	DIN EN 13240
Year of testing	2011
Test laboratory	DBI-Gastechnisches Institut gGmbH Freiberg
Number of test laboratory	12
Number of test report	DBI F 11/12/0184



Flue gas values

	Wood
Flue gas mass flow [g/s]	6.6
Flue gas mass flow [g/s]	296
Necessary flue draught [Pa]	12

Further important characteristics of the appliance

Suitability for installation to a shared flue¹⁾



Connectivity to the central heating system



General technical approval for room sealed operation



¹⁾ For unsealed operation it is possible to install the appliances to a shared flue system (please see installation manual).

On behalf of the manufacturer, the HKI Industrieverband e.V. hereby confirms compliance with the respective requirements* in accordance with 1.BImSchV. The type test report of the fireplace has been submitted to the HKI Industrieverband e.V.

* A green check mark with a „1“ indicates that the requirements of the 1st BImSchV are fulfilled, a green check mark with a „2“ indicates that the 2nd level of the 1st BImSchV is fulfilled. A yellow check mark shows that the transitional regulation of the 1st BImSchV is fulfilled and a red line means that the 1st BImSchV is not fulfilled.

Evaluation of emission data and efficiency Wood

Norm DIN EN 13240 (Intermittent burning): Roomheater with flat-layer firing	Evaluation
D - 1.BImSchV	 Stufe 2
A - Austrian regulation referred to Art 15a B-VG	 2015
CH - Swiss clean air act	
DK - Danish regulation for air pollution from wood burners	
F - Crédit d'impôt à la transition énergétique	 7★

Evaluation of emission data and efficiency Lignite briquettes

Norm DIN EN 13240 (Intermittent burning): Roomheater with flat-layer firing	Evaluation
D - 1.BImSchV	!
DK - Danish regulation for air pollution from wood burners	!

- 
Stufe 2 Compliant with the requirements of the 2nd stage of the 1.BImSchV (only for Germany)
- 
Stufe 1 Compliant with the requirements of the 1st stage of the 1.BImSchV (only for Germany)
- 
2015 Compliant with the requirements of the Austrian Agreement pursuant to Art. 15a B-VG from 2015 (applies only to Austria)
- 
7★ Compliant with the requirements for the „Crédit d'impôt“ promotion in France, the fireplace complies with the classification 7* of the Flamme Verte Label
- 
6★ Compliant with the requirements for the „Crédit d'impôt“ promotion in France, the fireplace complies with the classification 6* of the Flamme Verte Label
- 
5★ Compliant with the requirements for the „Crédit d'impôt“ promotion in France, the fireplace complies with the classification 5* of the Flamme Verte Label
- 
★ Compliant with the requirements of the 1 star stage in Italy.
- 
★★ Compliant with the requirements of the 2 star stage in Italy.
- 
★★★ Compliant with the requirements of the 3 star stage in Italy.
- 
★★★★ Compliant with the requirements of the 4 star stage in Italy.
- 
★★★★★ Compliant with the requirements of the 5 star stage in Italy.
-  Fulfils the requirements
-  Complies with requirements of the transition ruling (1.BImSchV)
-  Requirements are not fulfilled
-  No information/unknown
-  No measuring values are available for this fuel, operation with this fuel is not permitted

No symbol means that there are no requirements.

Here you will find further information